

# Quick-Start-Guide MIPI-CSI CAM

For STKa8Mx

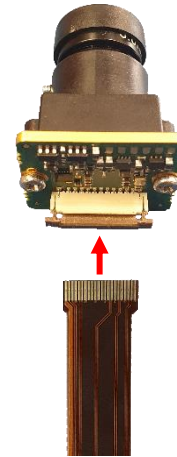


## Hardware Setup:

A

### CONNECT FPC-CABLE TO CAMERA

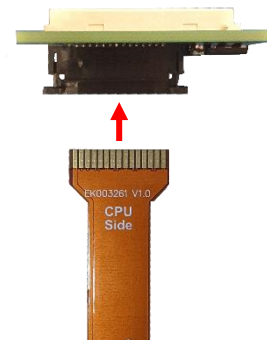
1. Open the clip on the socket
2. Plug in the Cable (Pay attention to the polarity of the contacts!)
3. Gently press the clip towards the connector to hold the cable in place



B

### CONNECT FPC-CABLE TO THE ADAPTER

1. Open the clip on the socket
2. Plug in the Cable (Pay attention to the polarity of the contacts!)
3. Gently press the clip towards the connector to hold the cable in place

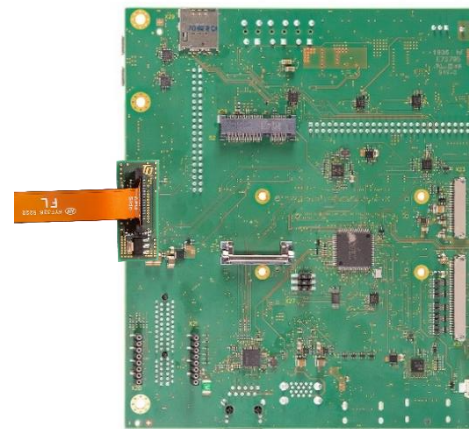


C

### CONNECT THE ADAPTER TO THE MBa8Mx

Connect the adapter to the connector (X31) on the bottom side of the MBa8Mx board.

Make sure to remove the lens cap before using the camera.



## Software Setup:

For information on how to start the camera, please refer to our Support Wiki:  
[https://support.tq-group.com/en/arm/tqma8mx/linux/yocto/how\\_to/target#mipi\\_csi](https://support.tq-group.com/en/arm/tqma8mx/linux/yocto/how_to/target#mipi_csi)