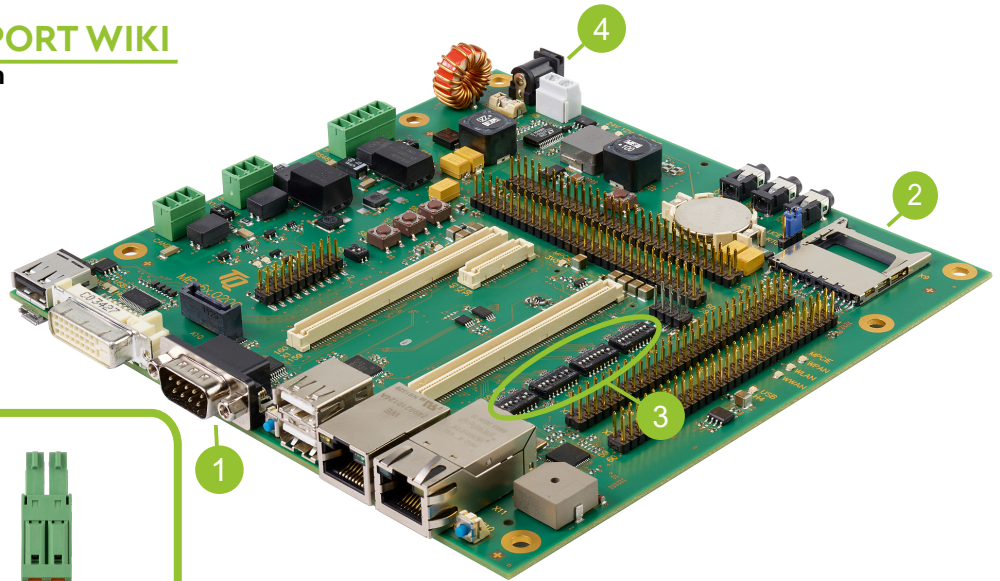


Quick-Start-Guide STKa6x

Arm® architecture




VISIT OUR SUPPORT WIKI
support.tq-group.com



i Hardware Setup

- 1 Debug/Serial
- 2 SD-Card
- 3 DIP-Switches
- 4 Power



Power Adapter
Not required with all carrier boards

CONNECT STARTERKIT TO HOST PC

Connect STKa6x using the provided Micro USB cable to connect interface X15 to a USB port on the host. A USB serial driver might be required on the host to operate with the Starterkit. Detailed instructions are available on the STK Quicksteps Wiki page.

RUN TERMINAL EMULATOR AND CONFIGURE SERIAL PORT

After connecting the STKa6x, one new serial ports are available on the Host. This port is the U-Boot / Linux serial debug console.

A terminal emulator is required on the Host (Tera Term is recommended). Configure the serial port using the settings from the table on the right.

Baudrate	115200
Data bits	8
Parity	none
Stop Bits	1
Handshake	XON / XOFF

SUPPLY THE STARTERKIT WITH POWER

Connect the provided power supply to X4 on the STKa6x.

Caution when using a different power supply!

The Starterkit is designed to operating with a regulated power supply of **24V**.

ESTABLISH SERIAL CONNECTION

The bootloader and operating system outputs are displayed in the terminal. Once the boot process is complete, log in to the system using the default user "root" without a password.

Quick-Start-Guide STKa6x

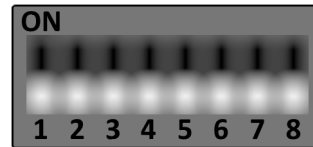
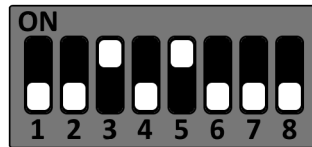
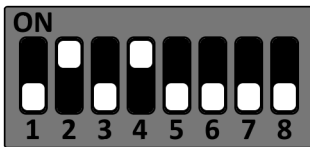
Arm® architecture



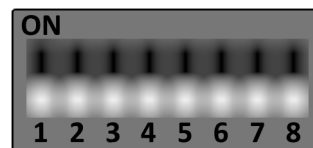
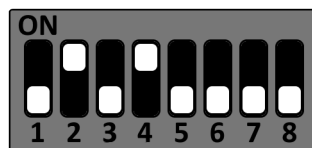
Boot device selection

The boot device must be selected with DIP switches **S1, S2, S4 and S5** accordingly.
By default, the STKa6x starts in SD card configuration.

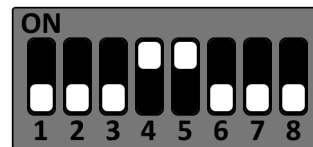
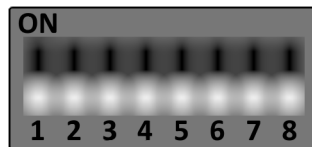
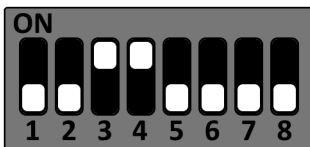
Configuration SD card



Configuration eMMC



Configuration SPI NOR



! For latest documentation, BSPs, etc. please visit:

tq-group.com/en/products/tq-embedded/arm-architecture/tqma6x
support.tq-group.com/tqma6x

Visit our Website:

tq-group.com/en/products/tq-embedded

Visit the Quicksteps Page to get started:

https://support.tq-group.com/en/arm/tqma6x/mba6x/stk_quicksteps

CREATE A TICKET

Through the TQ-Embedded Helpdesk, you can easily create and manage various types of requests.

support.tq-group.com/helpdesk

