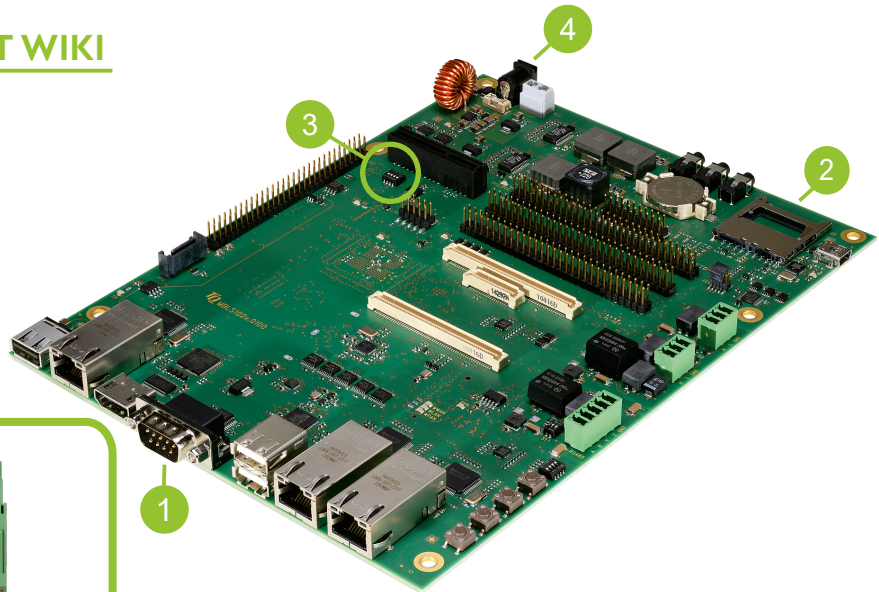


# Quick-Start-Guide STKLS102xA

## QorIQ® Layerscape



VISIT OUR SUPPORT WIKI  
[support.tq-group.com](https://support.tq-group.com)



### i Hardware Setup

- 1 Debug/Serial
- 2 SD-Card
- 3 DIP-Switches
- 4 Power



**Power Adapter**  
Not required with all carrier boards

## CONNECT STARTERKIT TO HOST PC

Connect STKLS102xA using the provided Micro USB cable to connect interface X5 to a USB port on the host. A USB serial driver might be required on the host to operate with the Starterkit. Detailed instructions are available on the STK Quicksteps Wiki page.

## RUN TERMINAL EMULATOR AND CONFIGURE SERIAL PORT

After connecting the STKLS102xA, one new serial ports are available on the Host. This port is the U-Boot / Linux serial debug console.

A terminal emulator is required on the Host (Tera Term is recommended). Configure the serial port using the settings from the table on the right.

<b>Baudrate</b>	115200
<b>Data bits</b>	8
<b>Parity</b>	none
<b>Stop Bits</b>	1
<b>Handshake</b>	XON / XOFF

## SUPPLY THE STARTERKIT WITH POWER

Connect the provided power supply to X34 on the STKLS102xA.

Caution when using a different power supply!

The Starterkit has a wide range input from **18V** to **28V** and is designed to operating with a regulated power supply.

## ESTABLISH SERIAL CONNECTION

The bootloader and operating system outputs are displayed in the terminal. Once the boot process is complete, log in to the system using the default user "root" without a password.

# Quick-Start-Guide STKLS102xA

## QorIQ® Layerscape



### Boot device selection

The boot device must be selected with DIP switch **S3** accordingly.  
By default, the STKLS102xA starts in SD card configuration.

#### Configuration SD card



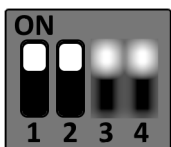
**!** Do not use SD Card when eMMC is placed on TQMLS102xA !

#### Configuration eMMC

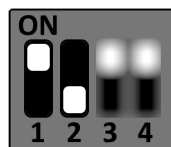


**!** Info: eMMC is a placement option on TQMLS102xA

#### Configuration FlexSPI

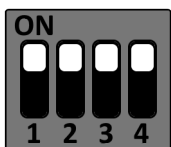


Without eMMC



With eMMC

#### Default Configuration



**!** **For latest documentation, BSPs, etc. please visit:**  
[tq-group.com/en/products/tq-embedded/qorq-layerscape/tqmls102xa](http://tq-group.com/en/products/tq-embedded/qorq-layerscape/tqmls102xa)  
[support.tq-group.com/tqmls102xa](http://support.tq-group.com/tqmls102xa)

Visit our Website:  
[tq-group.com/en/products/tq-embedded](http://tq-group.com/en/products/tq-embedded)

Visit the Quicksteps Page to get started:  
[https://support.tq-group.com/en/layerscape/tqmls102xa/stk\\_quicksteps](https://support.tq-group.com/en/layerscape/tqmls102xa/stk_quicksteps)

### CREATE A TICKET

Through the TQ-Embedded Helpdesk, you can easily create and manage various types of requests.  
[support.tq-group.com/helpdesk](http://support.tq-group.com/helpdesk)

